

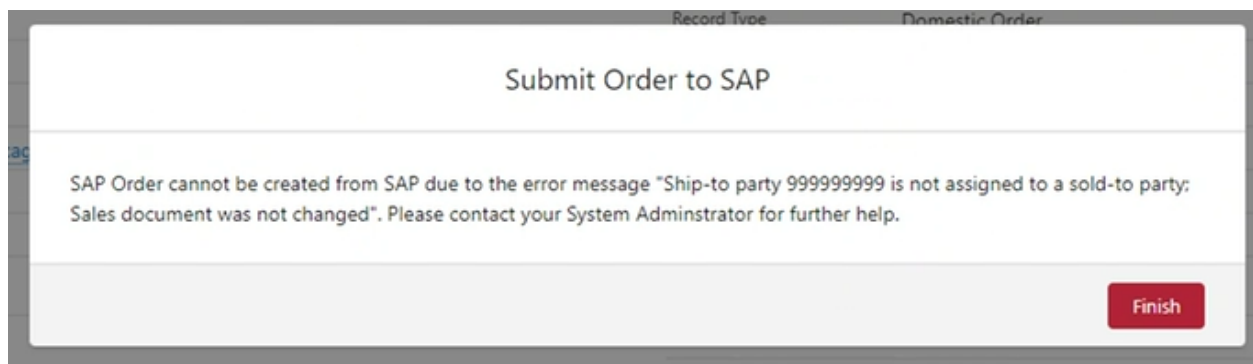
# Quoted Orders Common Errors Guide July 2022

## Purpose

Use this guide as a reference when trying to identify and resolve common errors in completing Quoted Orders.

## SAP Order Error Messages

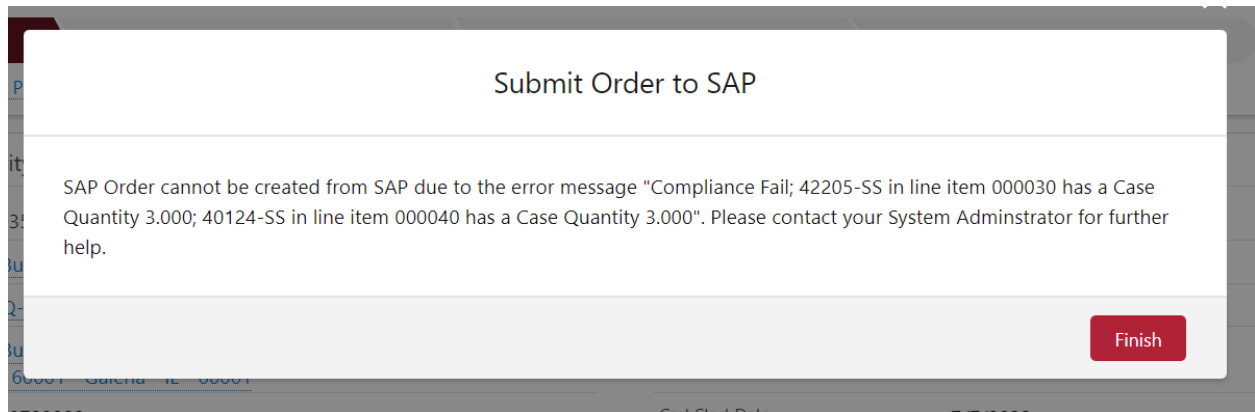
**When the wholesaler does not have an active SAP ID:**



SAP Order cannot be created from SAP due to the error message "Ship-to party 999999999 is not assigned to a sold-to party; Sales document was not changed". Please contact your System Administrator for further help.

**Compliance Fail related to Case Qty:**

**(This is where products have to be ordered at certain levels of quantity)**



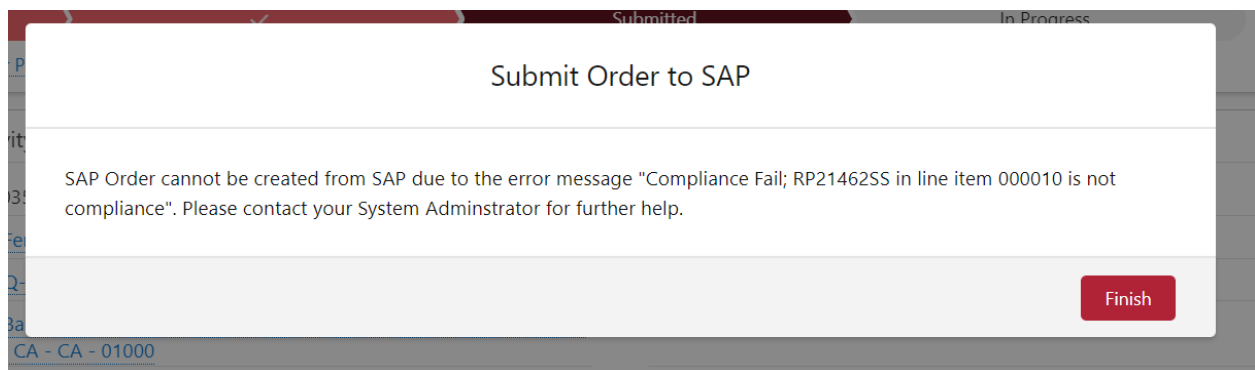
Submit Order to SAP

SAP Order cannot be created from SAP due to the error message "Compliance Fail; 42205-SS in line item 000030 has a Case Quantity 3.000; 40124-SS in line item 000040 has a Case Quantity 3.000". Please contact your System Administrator for further help.

Finish

SAP Order cannot be created from SAP due to the error message "Compliance Fail; 42205-SS in line item 000030 has a Case Quantity 3.000; 40124-SS in line item 000040 has a Case Quantity 3.000". Please contact your System Administrator for further help.

#### Ordering non-compliant product:



Submitted In Progress

Submit Order to SAP

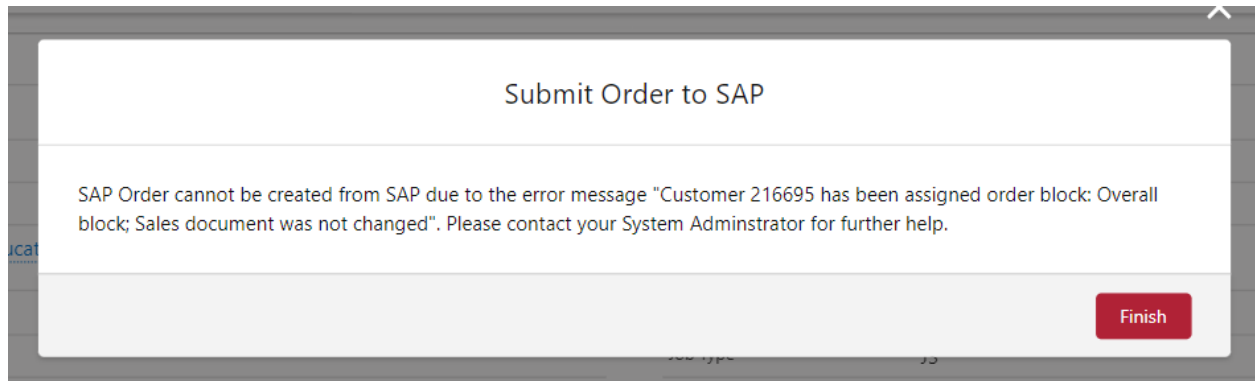
SAP Order cannot be created from SAP due to the error message "Compliance Fail; RP21462SS in line item 000010 is not compliance". Please contact your System Administrator for further help.

Finish

CA - CA - 01000

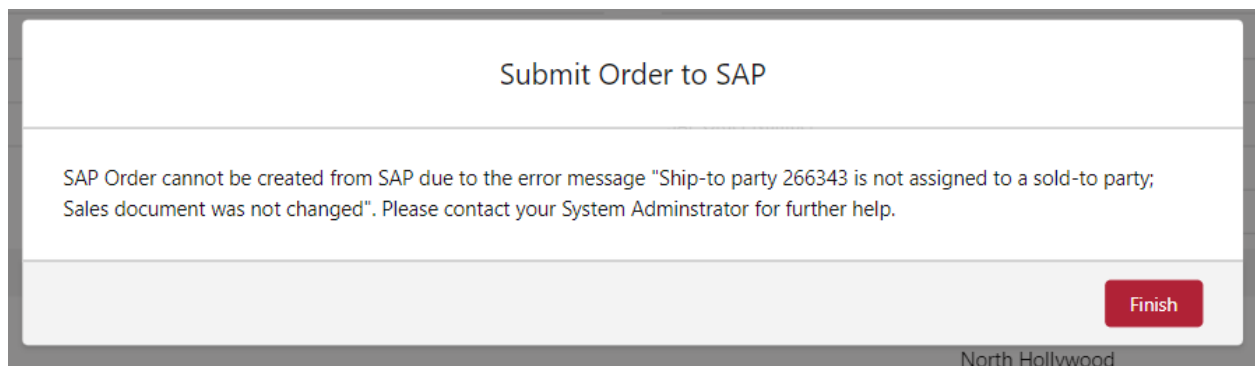
SAP Order cannot be created from SAP due to the error message "Compliance Fail; RP21462SS in line item 000010 is not compliance". Please contact your System Administrator for further help.

#### Trying to order for a wholesaler that is on a SAP Block:



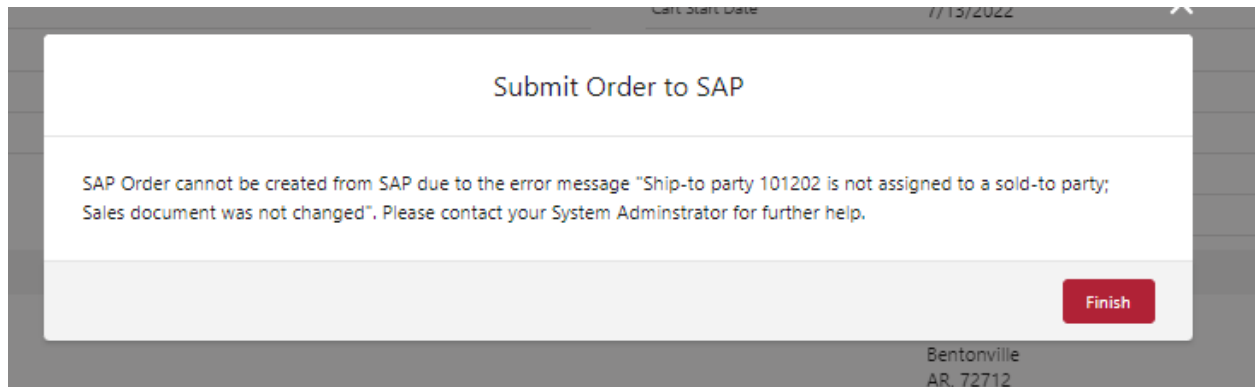
SAP Order cannot be created from SAP due to the error message "Customer 216695 has been assigned order block: Overall block; Sales document was not changed". Please contact your System Administrator for further help.

**When trying to order off a wholesaler that is inactive:**



SAP Order cannot be created from SAP due to the error message "Ship-to party 266343 is not assigned to a sold-to party; Sales document was not changed". Please contact your System Administrator for further help.

**Error message when the Wholesaler only has a Bill to number listed, not Ship To number:**



Cart Start Date 7/13/2022

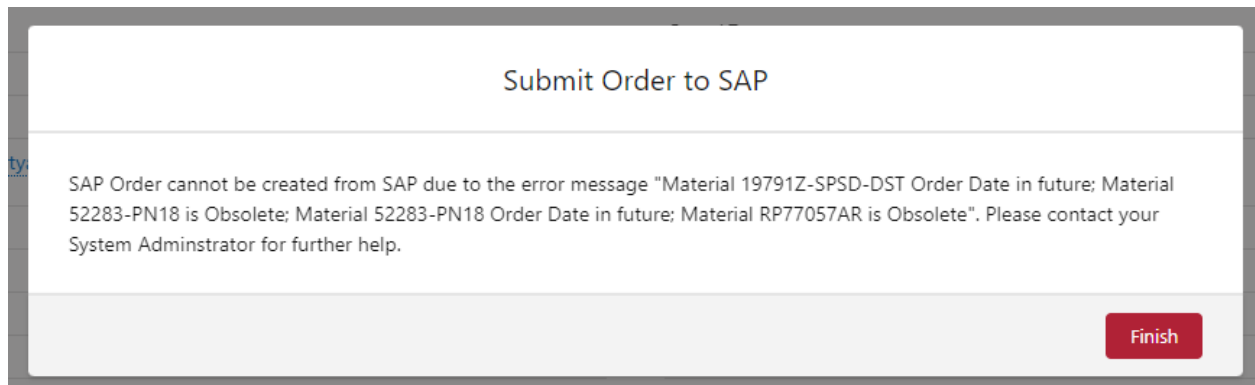
**Submit Order to SAP**

SAP Order cannot be created from SAP due to the error message "Ship-to party 101202 is not assigned to a sold-to party; Sales document was not changed". Please contact your System Administrator for further help.

**Finish**

Bentonville  
AR, 72712

**Ordering obsolete product:**



**Submit Order to SAP**

SAP Order cannot be created from SAP due to the error message "Material 19791Z-SPSD-DST Order Date in future; Material 52283-PN18 is Obsolete; Material 52283-PN18 Order Date in future; Material RP77057AR is Obsolete". Please contact your System Administrator for further help.

**Finish**

SAP Order cannot be created from SAP due to the error message "Material 19791Z-SPSD-DST Order Date in future; Material 52283-PN18 is Obsolete; Material 52283-PN18 Order Date in future; Material RP77057AR is Obsolete". Please contact your System Administrator for further help.

## For more information

- For questions about the Quoted Orders process, reach out to your project sales manager
- For questions on Salesforce training, contact [TradeDigitalRoadmap@deltafaucet.com](mailto:TradeDigitalRoadmap@deltafaucet.com)
- For issues and escalations related to quoted orders, email the DFC Quote Desk at [quotedesk@deltafaucet.com](mailto:quotedesk@deltafaucet.com)